

Cable Lug

Standard

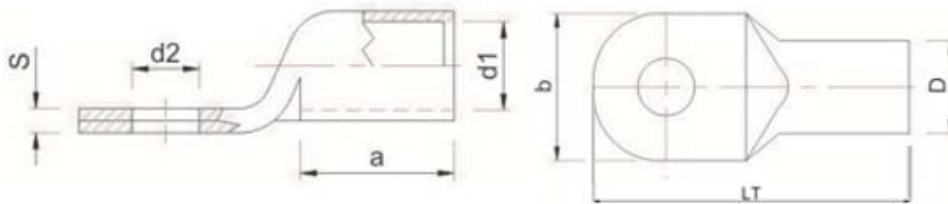
IEC 61238-1



Specification

Material	Copper
Finishing	Tin Plated
Composition of Copper	≥ 99,92%
Electrical Conductivity	≥ 98%
Tensile Load	≥ 250N
Class	B

Dimension (mm)



Ordering Code

Cable Size (sqmm)	Bolt Ø	Dimension (mm)							Lot Size (pcs)	Weight per-box (Kg)	Ordering Code
		a	b	d1	d2	D	LT	S			
6	M5	10.5	10.0	3.8	5.3	5.5	20.4	1.2	100	0.25	80110
10	M5	11.6	10.0	4.3	5.3	6.0	23.7	1.4	50	0.15	80111
16	M6	16.0	14.2	5.5	6.3	7.8	25.1	2.0	25	0.17	80112
25	M6	14.4	14.0	6.8	6.3	9.0	25.9	2.0	20	0.15	80113
35	M8	15.7	16.0	8.2	8.3	11.0	31.4	3.0	10	0.13	80114
50	M10	20.0	18.0	9.0	10.4	12.0	37.0	3.0	20	0.38	80115
70	M10	21.4	21.0	11.2	10.4	14.5	44.2	3.3	10	0.28	80116
95	M12	24.0	24.5	13.4	12.5	17.0	51.8	4.0	5	0.21	80117